

Mirrlees Blackstone 5.5 MW Genset (YOM 1995)

Sale Includes;

Mirrlees Blackstone;

Type; KVMAJMK3

RPM; 514

Serial Number ; 95-33-01

Engine Number; 7116-01

Hours run; 87,200

Fuel; Bunker & diesel

KW; 5,593 continuous

KW; 6,152 Overload one hour

Dry weight of complete engine without flywheel 82,000 kg

Governor;

Woodward EGB 58

Alternator

Brand; Brush

Continuous output; 5,369 KW

Overload one hour; 5,906 KW

Volts; 4160

HZ; 60

Date; 1995

Weight; 33,600 kg

Turbo Chargers

2 x Brown Boveri VTR 354

Controls;

Medium voltage switchgear

MCC (with some heater controls to be retained)

Accessories;

Item	Equipment	Nos.	Made
1	Jacket water pump	1	Brook Hansen
2	Jacket water tank (cap 350 ltrs)	1	
3	Valve cage cooling pump	1	Brook Hansen
4	Valve cage cooling tank (cap122ltrs)	1	
5	Secondary water pump	1	Brook Hansen
6	Electric air compressor	1	Atlas Copco
7	Air starting tank	1	Abbott
8	Diesel Engine air compressor		Lister Peter/Compaire Reavell
9	Lube oil filters RH , LH	2	Vokes
10	Lube oil priming pump	1	Brook Hansen

11	HFO purifier module with: 2 HFO purifiers 1 feed pump	1	Alfa Laval
12	Fuel busrail/ module with : 2 HFO filters 1 HFO inlet pump 1 HFO heater 1 LFO inlet pump 2 LFO filters	1	Brook Crompton Heatrae Industrial Alpak 11 vokes
13	Lube oil purifier module with: 1 LO purifier 1 feed pump	1	Alfa Laval Alfa Laval Brook Crompton
14	Jacket water Heat exchanger	1	Swep
15	Valve cage heat exchanger	1	Swep
16	Lube oil Heat exchanger	1	Swep
17	Alfa laval moatti LO filter	1	Alfa Laval
18	Fuel spill collector tank with : 1 transfer pump	1	BoodFord
19	HFO daily service tank (cap 7500ltrs)	1	
20	LFO daily service tank (cap 7500ltrs)	1	
21	Cooling Tower	1	Carter
22	Cooling Tower Motor Fan	1	Brook Hansen

See attached sheets for schematic of inclusions / exclusions.

Latest PMS History;

12K PMS in May 2008;

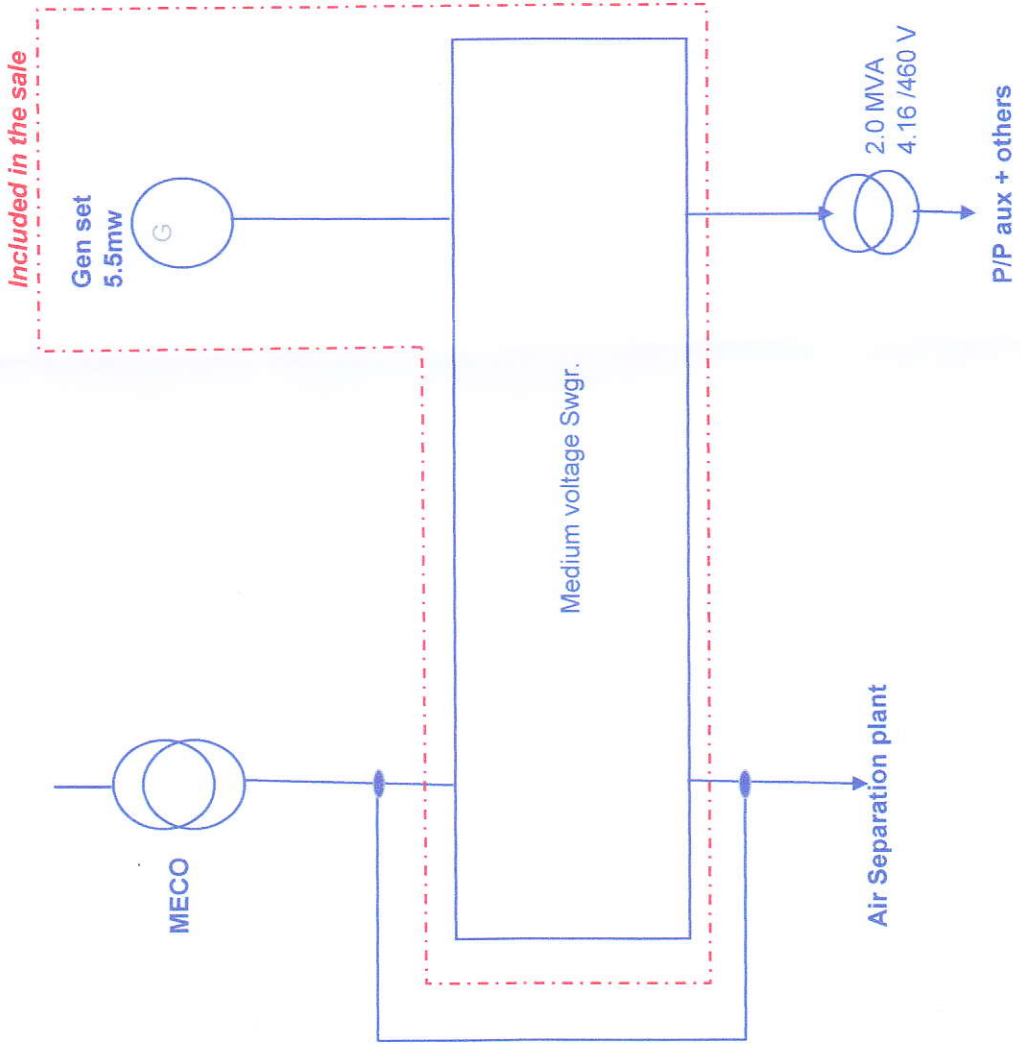
Cylinder heads, exhaust valves, valve cages & fuel injectors
 Fuel injection pumps
 Pistons and cylinder liners
 Cam bearings
 Conrod bearings
 Main bearings (all renewed)
 Auxiliary motors and pumps
 Instrumentations
 Running hours since above; 2,300

Turbo chargers;

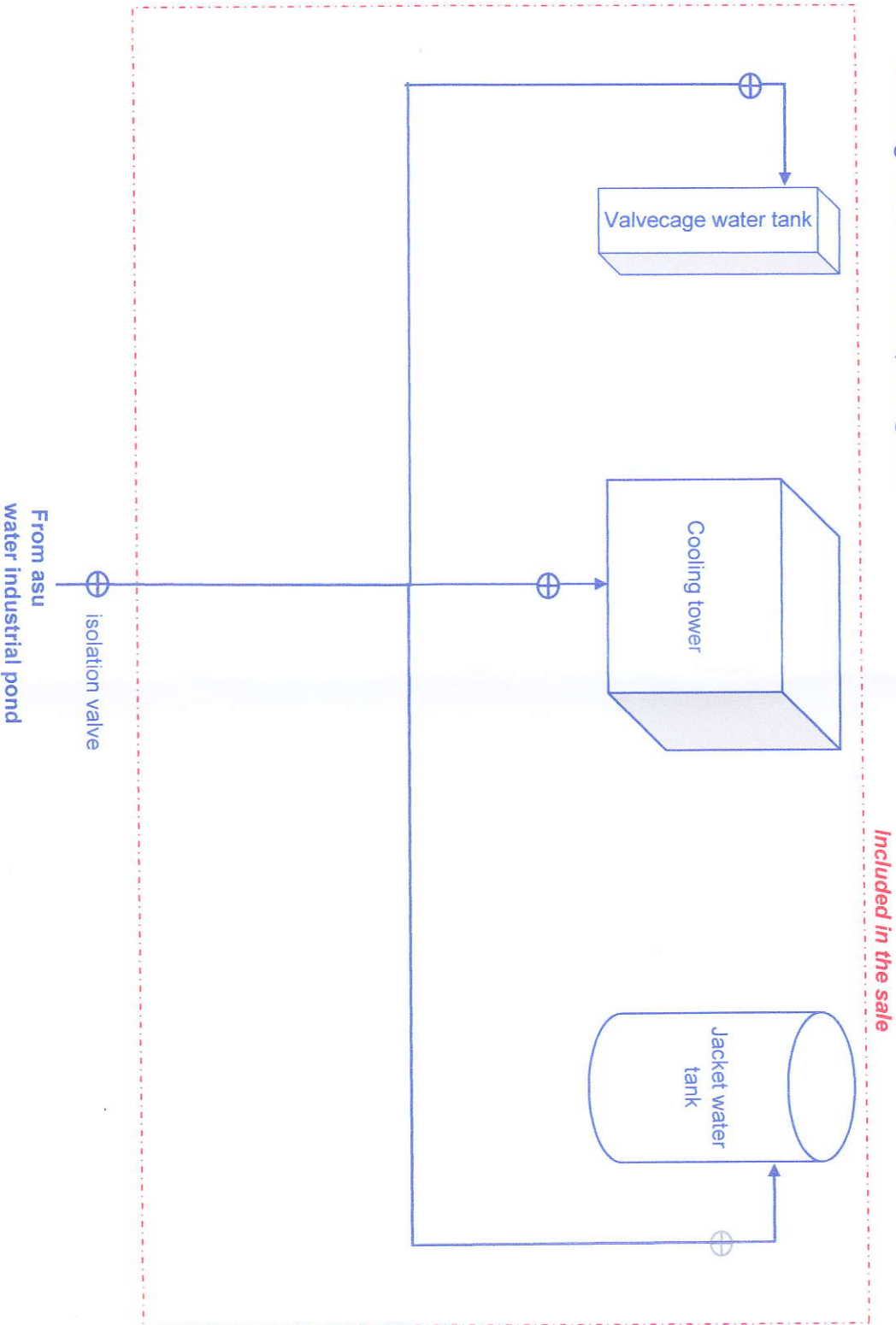
New nozzle rings
 New turbine blades
 Running hours since above; 1000

All maintenance records and documentation included.

Electrical diagram



Cooling water make up diagram



Fuel supply diagram

